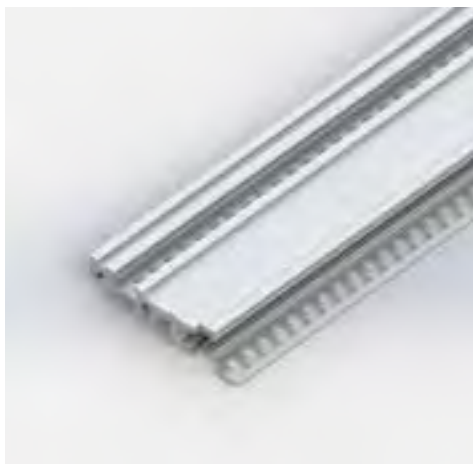
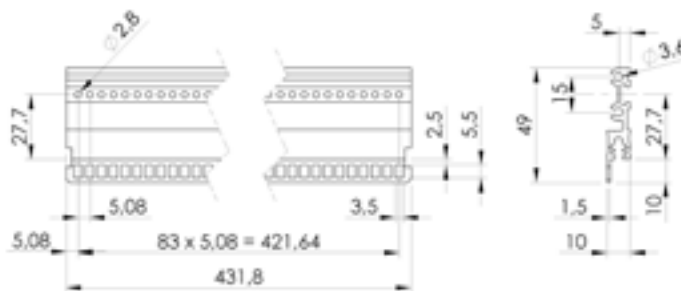


Front crosspieces

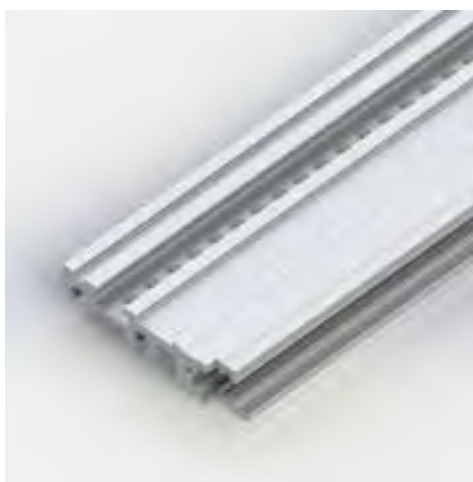


P/N: 221.191/085C 01



CPCI Front crosspiece for extractors 85TE

Material:
Aluminium extrusion
Finish:
Passivated (conductive)

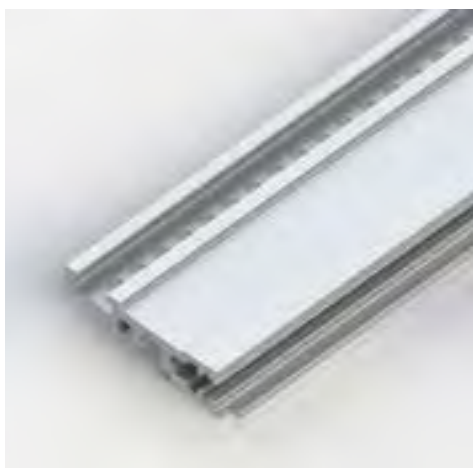


P/N: 221.192/085C 01



Front crosspiece 85TE

Material:
Aluminium extrusion
Finish:
Passivated (conductive)



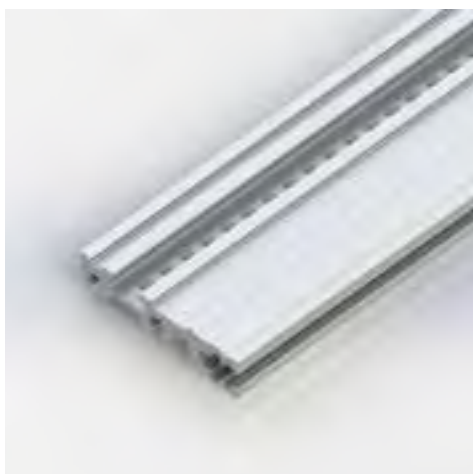
P/N: 221.199/085C 01



Front crosspiece Light 85TE

Material:
Aluminium extrusion
Finish:
Passivated (conductive)

Rear crosspieces



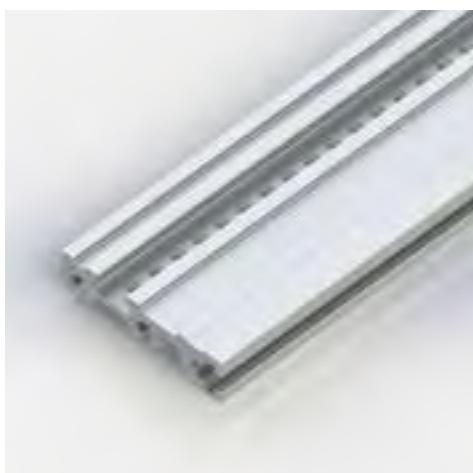
P/N: 221.193/085C 00



EMI rear crosspiece 85TE

Material:
Aluminium extrusion

Finish:
Passivated (conductive)



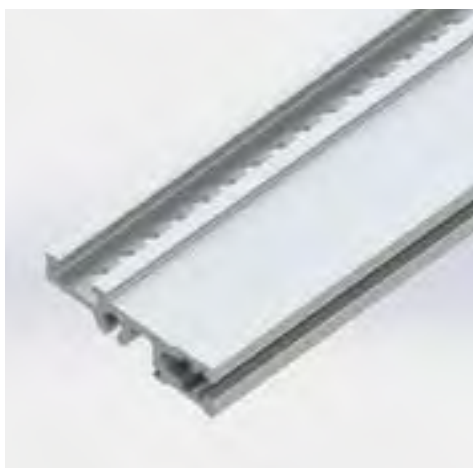
P/N: 221.194/085C 00



Univ. rear crosspiece 85TE

Material:
Aluminium extrusion

Finish:
Passivated (conductive)



P/N: 221.200/085C 00

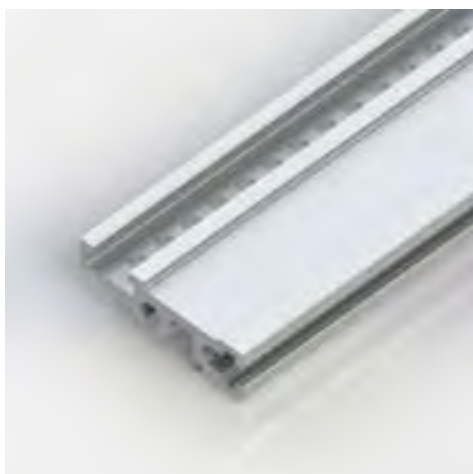


EMI rear crosspiece Light 85TE

Material:
Aluminium extrusion

Finish:
Passivated (conductive)

Rear and Mezzanine crosspieces



P/N: 221.201/085C 00



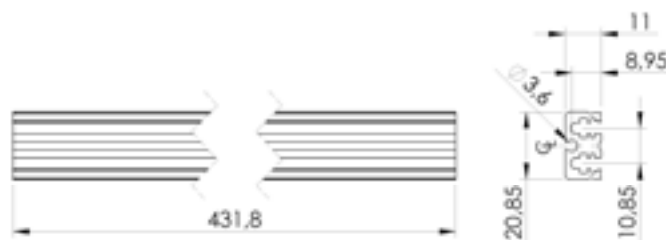
Univ. rear crosspiece Light 85TE

Material:
Aluminium extrusion

Finish:
Passivated (conductive)



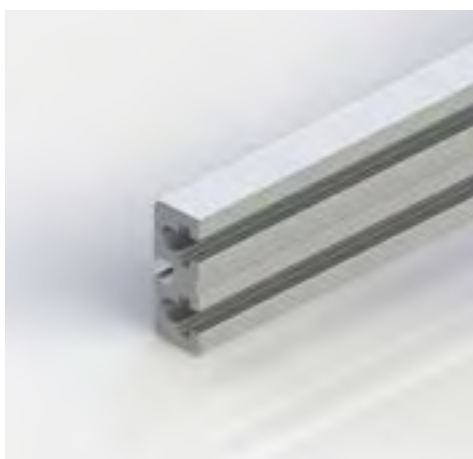
P/N: 221.195/085C 00



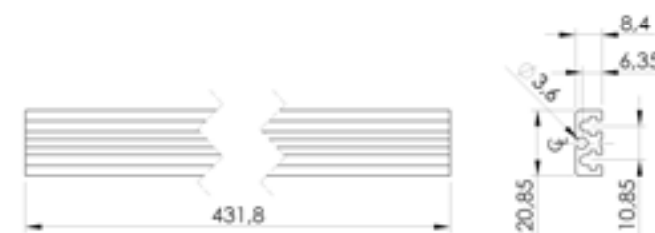
EMI Mezzanine crosspiece 85TE

Material:
Aluminium extrusion

Finish:
Passivated (conductive)



P/N: 221.196/085C 00



Univ. Mezzanine crosspiece 85TE

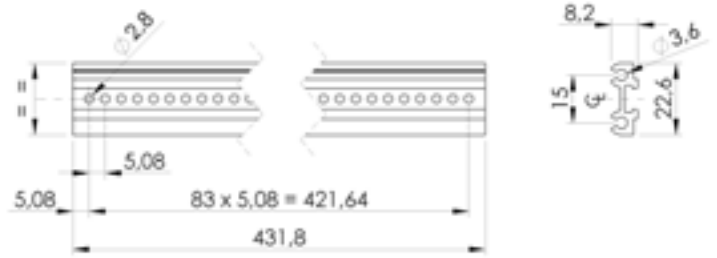
Material:
Aluminium extrusion

Finish:
Passivated (conductive)

Support crosspiece and shielding profile

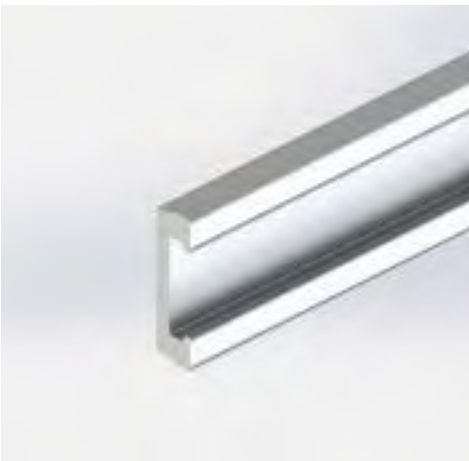


P/N: 221.197/085C 00



Support crosspiece for card guides 85TE

Material:
Aluminium extrusion
Finish:
Passivated (conductive)



P/N: 221.198/085C 00



Profile for shielding front crosspieces 85TE

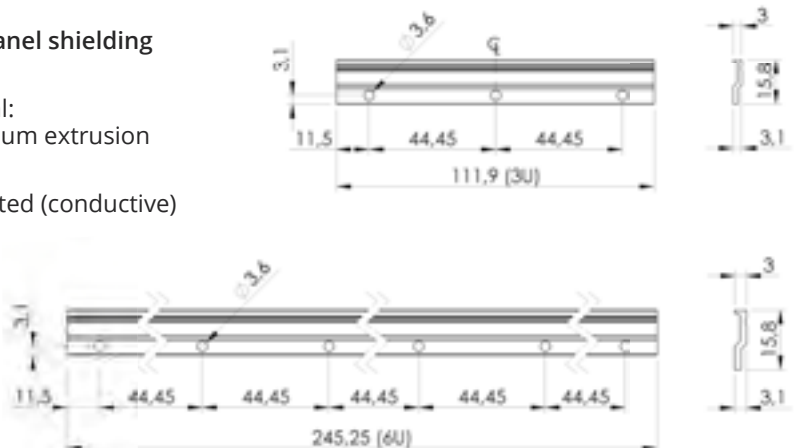
Material:
Aluminium extrusion
Finish:
Passivated (conductive)



P/N 3U: 223.501/903 00
P/N 6U: 223.501/906 00

Back panel shielding profile

Material:
Aluminium extrusion
Finish:
Passivated (conductive)



DIN41612 crosspiece - bars and insulating strip

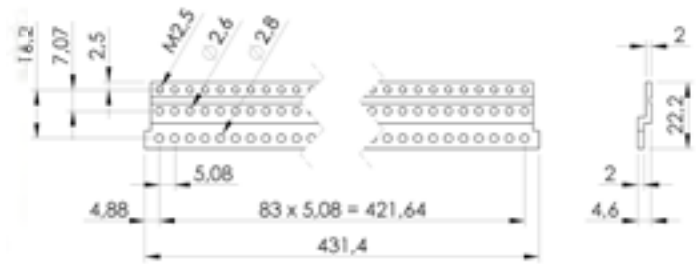


P/N: 221.206/085C 00

DIN41612 Back crosspiece 85TE

Material:
Aluminium extrusion

Finish:
Passivated (conductive)



P/N: 234.013/085 00

M2,5 Threaded 6x2 85TE

Material:
Steel
Finish:
Zinc plated



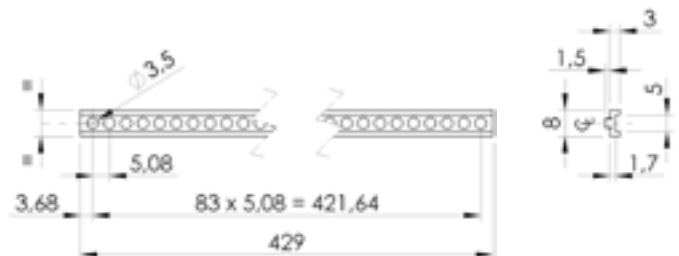
Material:
Stainless steel
P/N: 234.013/385 00



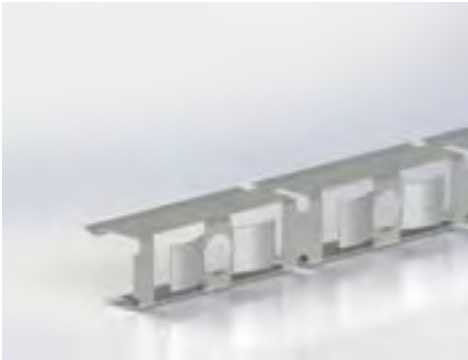
P/N: 234.150

Insulating strip 85TE

Material:
Noryl UL94-V0, Grey

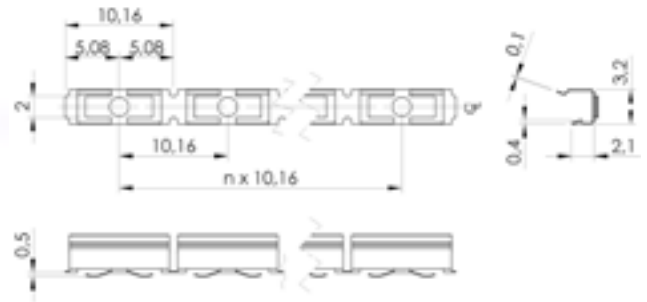


► Contact strip for crosspieces - Numbered strip and vertical division 6U



Contact strip for crosspieces

Material:
Stainless steel



P/N: 634.110/016 00



Numbered strip

Material:
Yellow PVC



N° 01-84 P/N: 800.000

N° 84-01 P/N: 800.001



6U Vertical division
3U + 3U

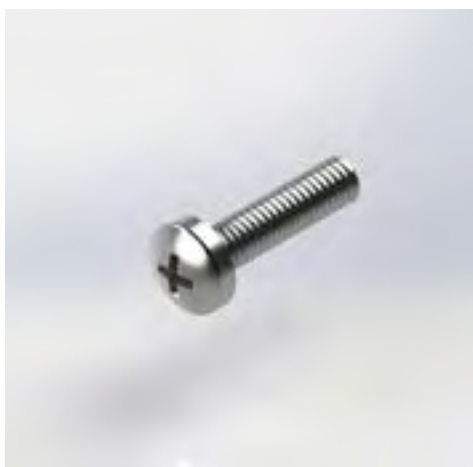
Material:
Aluminium

Finish:
Passivated (conductive)



P/N: 141.500/250 00

Accessories



Thread forming screw
crosshead M4X16 for
fixing the crosspieces

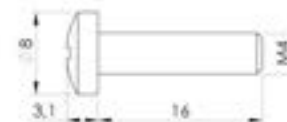
Material:
Stainless steel

P/N: 1183664

Material:
Steel

Finish:
Zinc plated

P/N: 444.004



Ph. cross recessed pan
head screw M2,5X8
for fixing DIN41612
crosspieces and insulating
strip

Material:
Stainless steel

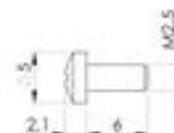
P/N: 401.140



Ph. cross recessed pan
head screw M2,5X6 for
fixing 6U vertical division

Material:
Stainless steel

P/N: 401.146



Examples of mounting



EMI Contact strip (front crosspiece)



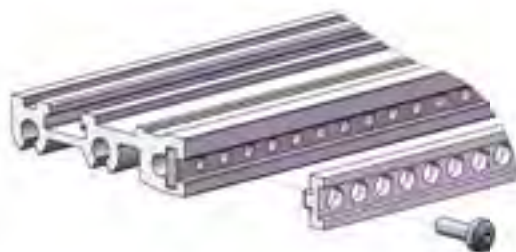
EMI Contact strip (back crosspiece)



Numbered strip (front crosspiece)



Numbered strip (back crosspiece)



Insulating strip (mezz. crosspiece)



DIN 41612 back crosspiece

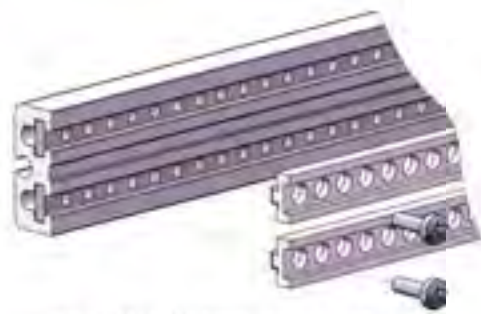


EMI Contact strip (mezz. crosspiece)

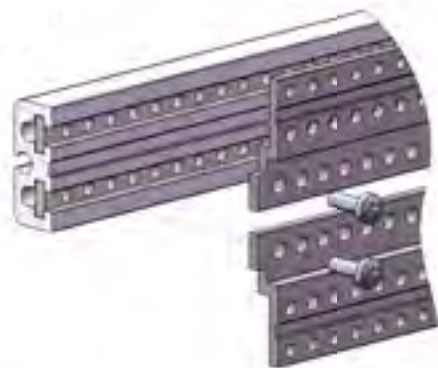


Numbered strip (mezz. crosspiece)

Examples of mounting



Insulating strip (mezz. crosspiece)



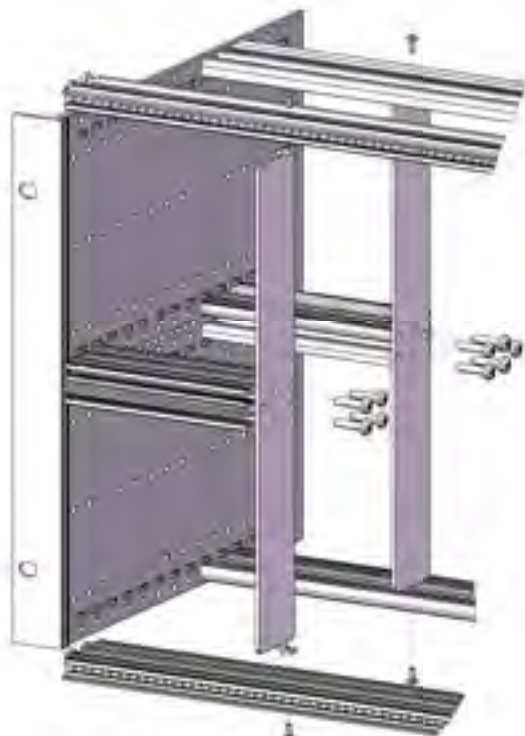
DIN41612 mezzanine back crosspiece



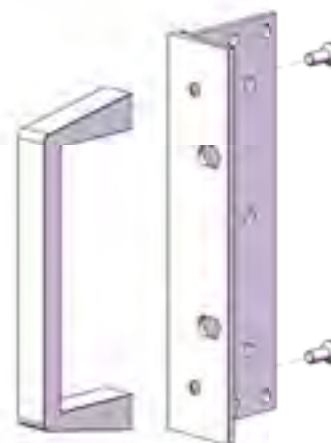
Shielding front crosspieces



Shielding back panel



6U Vertical division (3U+3U)



Handle



Bernini,1 8 Street - 20865 - Usmate Velate (MB) Italy
ph. +39 039 618231 fax +39 039 6013208

Vat.n. IT 02384250961 - Tax code 01696370137
REA MI 1255795 - Share Capital 2.000.000 FP

info@ompmechtron.com
www.ompmechtron.com