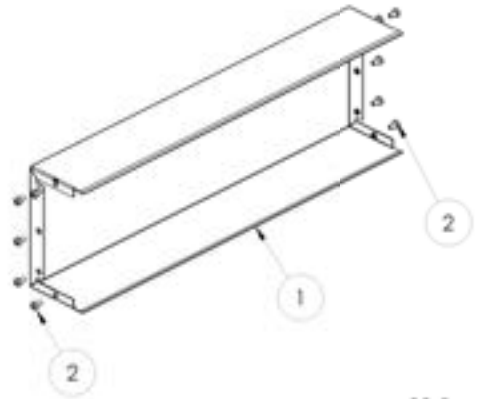


Back covers panel kit 3U 85TE - 6U 85TE



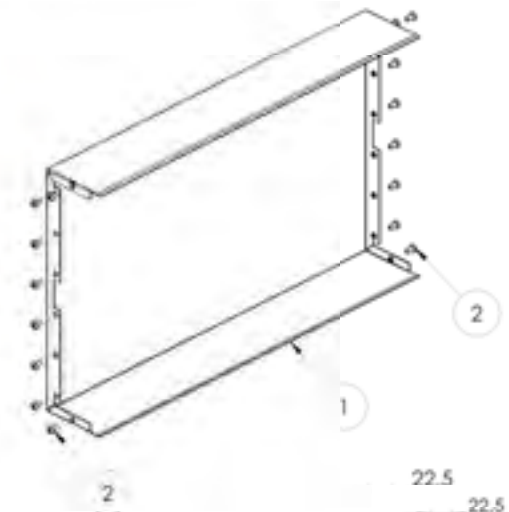
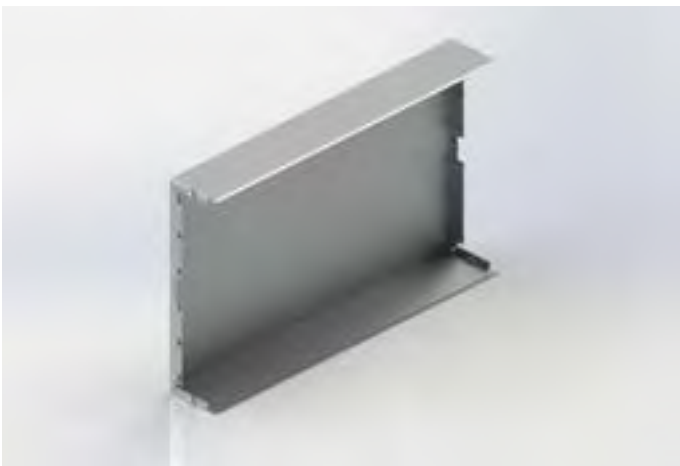
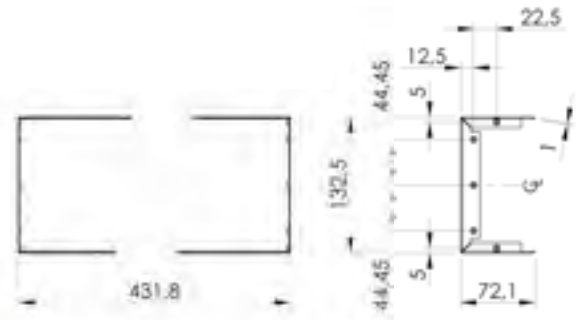
B.O.M.			
Pos.	P/N	Description	Q.ty
1	100.151/032 00	Cover side panel 3U 85TE	1
2	444.001	Thread forming screw M4x8	10

Back cover panel kit 3U 85TE

P/N: 081.503/832 00

Material:
Aluminium

Finish:
Passivated (conductive)



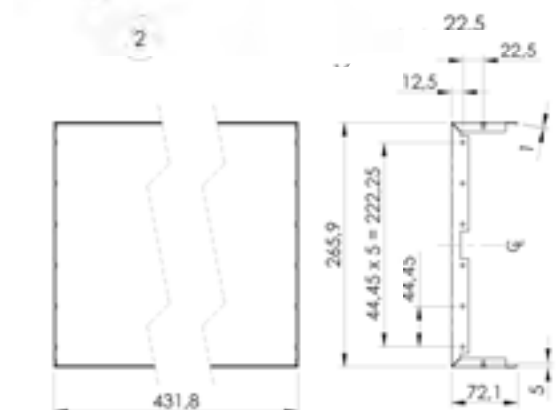
B.O.M.			
Pos.	P/N	Description	Q.ty
1	100.151/062 00	Cover side panel 6U 85TE	1
2	444.001	Thread forming screw M4x8	16

Back cover panel kit 6U 85TE

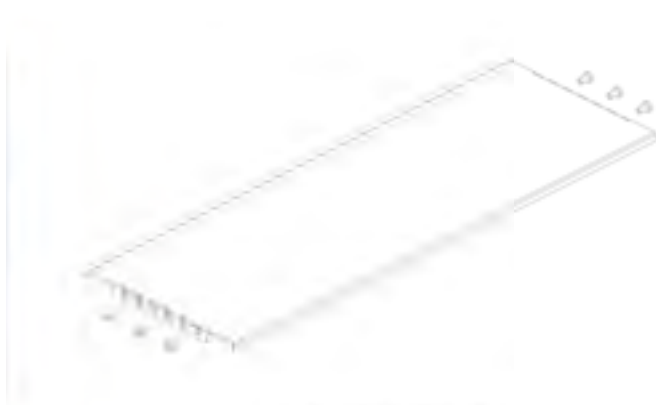
P/N: 081.503/862 00

Material:
Aluminium

Finish:
Passivated (conductive)



Top / Bottom covers kit



Top / Bottom cover kit (85TE)

Depth	P/N	N. Screws
160	081.503/022	6
220	081.503/023	10
280	081.503/024	14



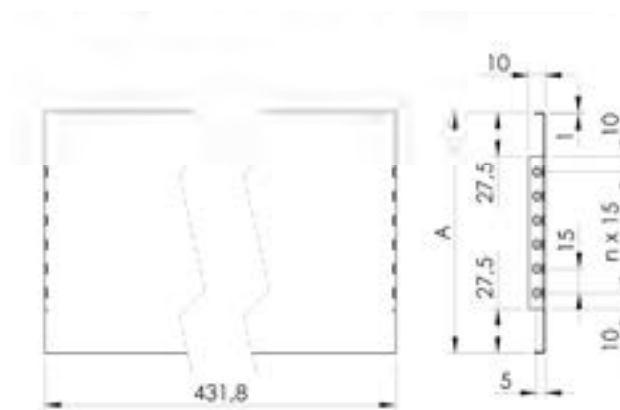
Top / Bottom cover kit EMI (85TE)

Depth	P/N	N. Screws	N. Fingers
160	081.503/222	6	2
220	081.503/223	10	2
280	081.503/224	14	2

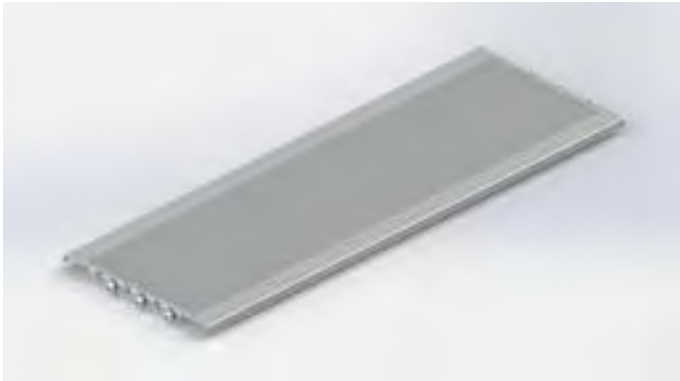
Top / Bottom cover (85TE)

Material:
Aluminium
Finish:
Passivated (conductive)

Depth	P/N	A
160	102.291/022	150
220	102.291/023	210
280	102.291/024	270



Top / Bottom perforated covers kit (Ø2mm holes)



Top / Bottom perforated cover kit (Ø2 85TE)

Depth	P/N	N. Screws
160	081.503/422	6
220	081.503/423	10
280	081.503/424	14



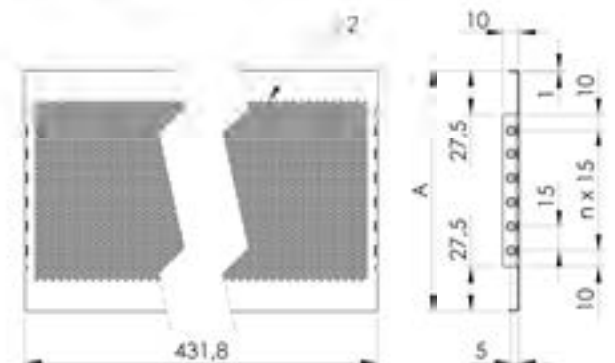
Top / Bottom perforated cover kit EMI (Ø2 85TE)

Depth	P/N	N. Screws	N. Fingers
160	081.503/522	6	2
220	081.503/523	10	2
280	081.503/524	14	2

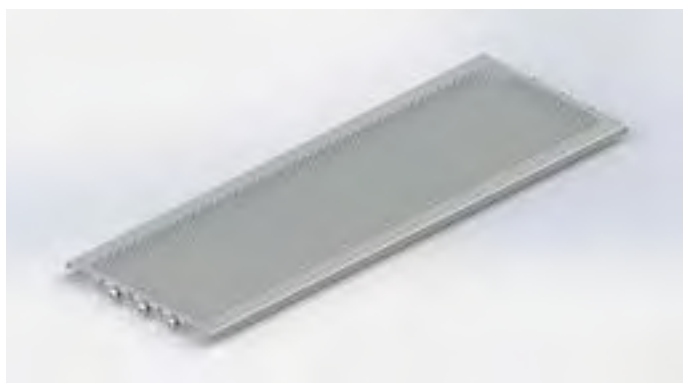
Top / Bottom perforated cover (Ø2 85TE)

Material:
Aluminium
Finish:
Passivated (conductive)

Depth	P/N	A
160	102.291/222	150
220	102.291/223	210
280	102.291/224	270

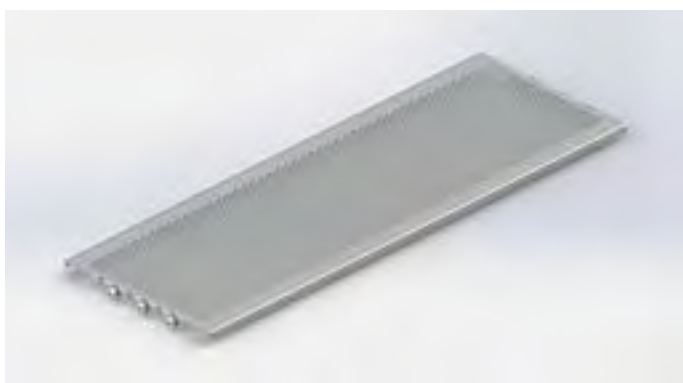


Top / Bottom perforated covers kit (Ø4mm holes)



Top / Bottom perforated cover kit (Ø4 85TE)

Depth	P/N	N. Screws
160	081.503/122	6
220	081.503/123	10
280	081.503/124	14



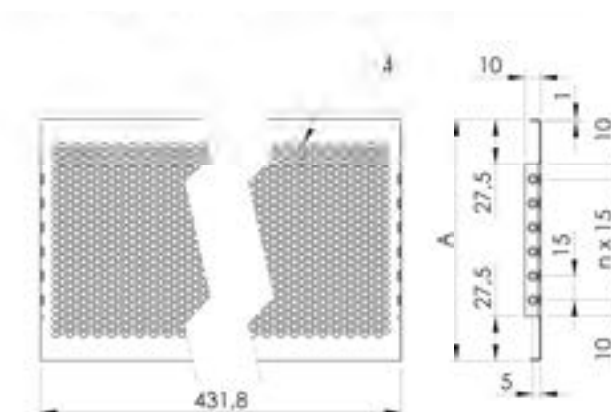
Top / Bottom perforated cover kit EMI (Ø4 85TE)

Depth	P/N	N. Screws	N. Fingers
160	081.503/322	6	2
220	081.503/323	10	2
280	081.503/324	14	2

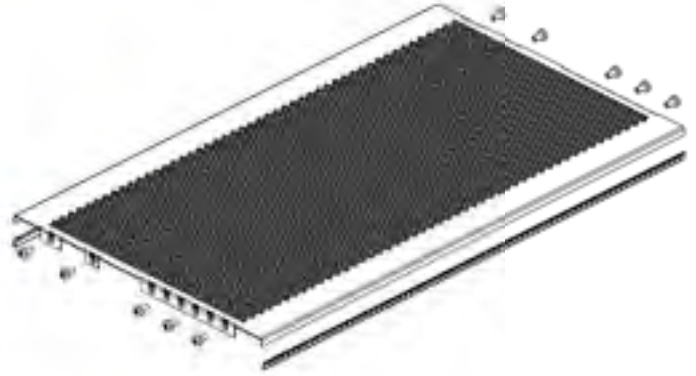
Top / Bottom perforated cover (Ø4 85TE)

Material:
Aluminium
Finish:
Passivated (conductive)

Depth	P/N	A
160	102.291/122	150
220	102.291/123	210
280	102.291/124	270



Top / Bottom covers kit EMI rear I/O 160/80 (Ø2 / Ø4mm holes)



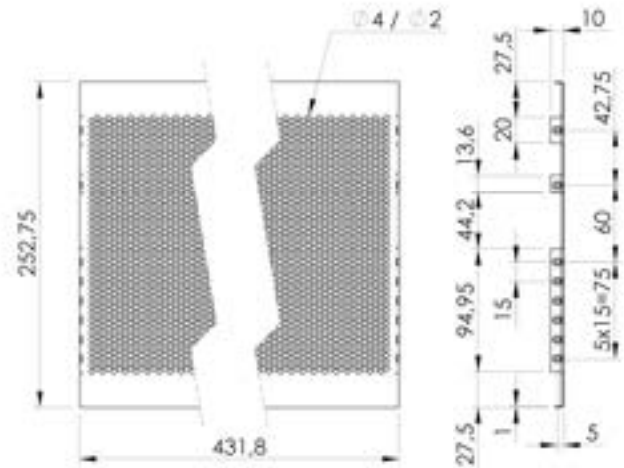
Top / Bottom cover kit EMI Rear I/O, 160/80 deep (85TE)

Ø	P/N	N. Screws	N. Fingers
2	081.503/613	10	2
4	081.503/713	10	2

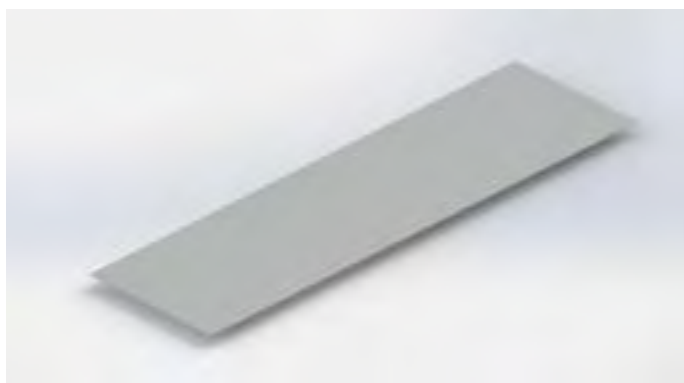
Top / Bottom cover Rear I/O, 160/80 deep (85TE)

Material:
Aluminium
Finish:
Passivated (conductive)

Ø	P/N
2	102.291/406
4	102.291/506

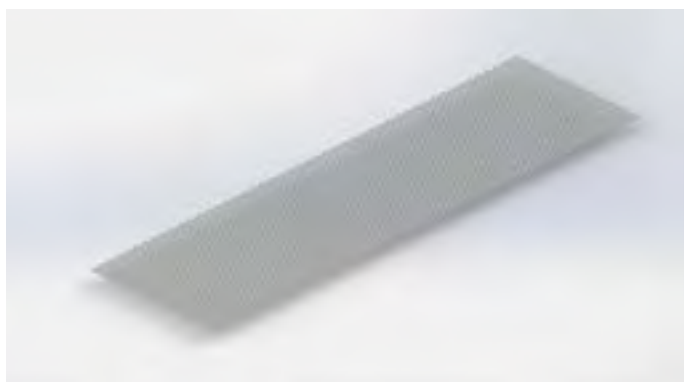


Top / Bottom covers Light (Blind, Ø2, Ø4)



Top / Bottom covers blind (85TE)

Depth	P/N	A
160	102.291/050	153,5
220	102.291/051	213,5

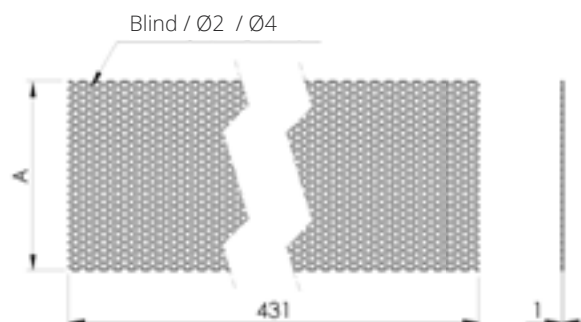


Top / Bottom perforated covers Ø2 - Ø4 (85TE)

Ø	Depth	P/N	A
2	160	102.291/250	153,5
2	220	102.291/251	213,5
4	160	102.291/150	153,5
4	220	102.291/151	213,5

Top / Bottom covers

Material:
Aluminium
Finish:
Passivated (conductive)



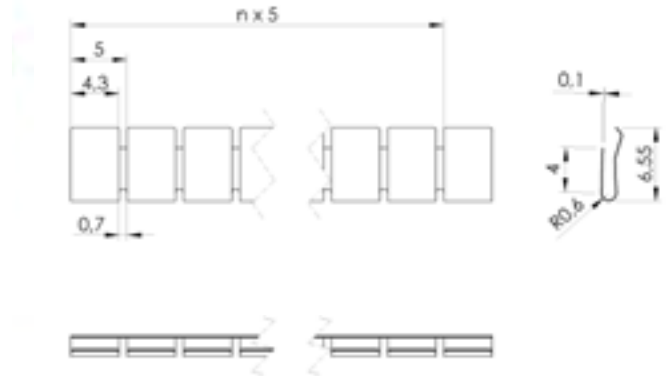
Contact strip for top/bottom cover and screw



Contact strip top and bottom cover

P/N: 634.110/012

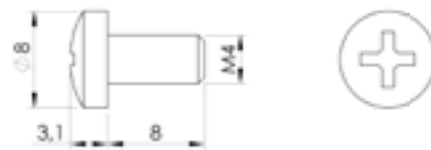
Material:
Copper (CuBe)



Thread forming screw crosshead M4X8

P/N: 444.001

Material:
Steel
Finish:
Zinc plated





Bernini,1 8 Street - 20865 - Usmate Velate (MB) Italy
ph. +39 039 618231 fax +39 039 6013208

Vat.n. IT 02384250961 - Tax code 01696370137
REA MI 1255795 - Share Capital 2.000.000 FP

info@ompmechtron.com
www.ompmechtron.com